

1 2 3 4 5 6

A

B

C

D

E

F

G

H

I

J

A

B

C

D

E

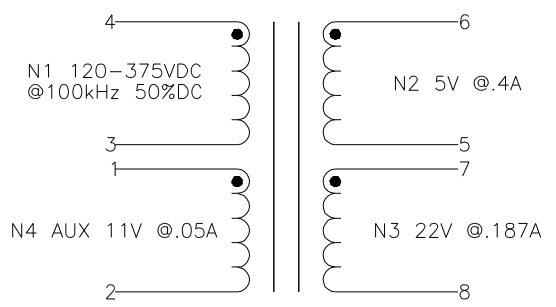
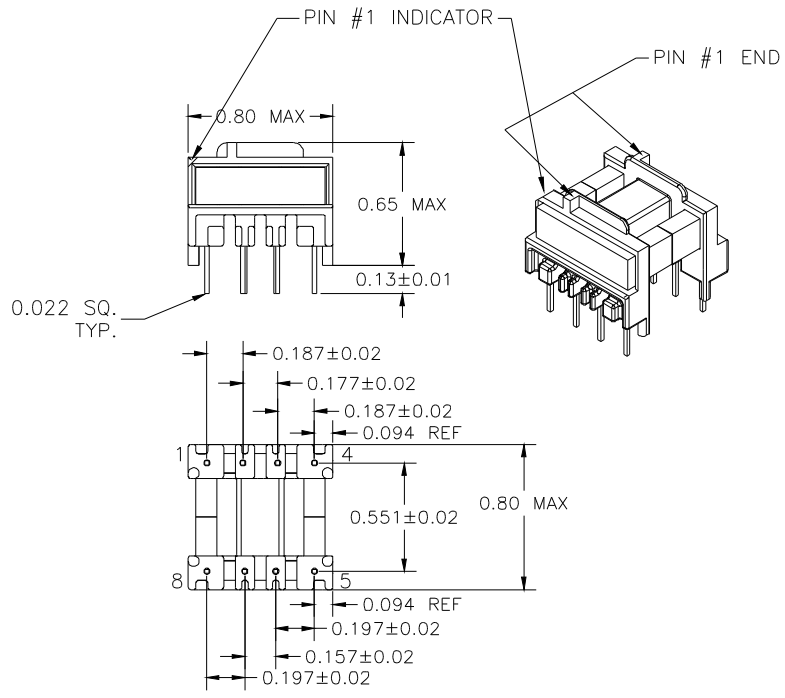
F

G

H

I

J



ELECTRICAL SPECIFICATIONS

L @ 1kHz .1V (3-4) 1.25mH ±10%

LL @ 100kHz .1V (3-4) 22µH TYP, TOL TBD  
(WITH 1,2,5-8 SHORTED)

URNS RATIO - ±3%

4-3:1-2 - 1:0.134

4-3:6-5 - 1:0.063

4-3:7-8 - 1:0.232

DCR - OHMS TYP, TOL TBD

N1 - 3.90

N2 - 0.045

N3 - 0.674

N4 - 0.168

HIPOT - 2500VAC 1SEC

1-4 TO 5-8

REVISION		DATE	MARKINGS	LOCATION
A	RELEASED	03/13/00	CRAMER (DATE CODE) CVP 10-021	PIN RAIL SIDE OF CORE
			DESCRIPTION 6VA VIPER, +5, +22 FLYBACK XFMR	TOLERANCE UNLESS OTHERWISE SPECIFIED 2 PLACE DECIMALS ±.010 3 PLACE DECIMALS ±.005 FRACTIONS ±1/64 ANGLES ±1/2°
			CUSTOMER DIGITAL APPLIANCE	PROPRIETARY INFORMATION PROPERTY OF CRAMER COIL & TRANSFORMER CO. DUPLICATION AND/OR DISTRIBUTION BY PERMISSION ONLY
			G:\DATA\SPECS\ENG\CVP\10-021	CUSTOMER PART NUMBER
			DR. CAM	DATE 03/13/00
			APPD. JDB	DATE 03/14/00
				CRAMER PART NUMBER CVP 10-021
				REV A

1 2 3 4 5 6